



Sonus Vitæ

The record of life

A kinetic sound installation

by lieberanalog

A dead tree trunk rotates. Its bark beetle feeding tunnels are enlarged analogously through huge lenses. The patterns are scanned live and translated into sounds, creating a constantly changing tapestry of sound. An acoustic expression of life and feeding opens up a new perspective on nature and its creativity.

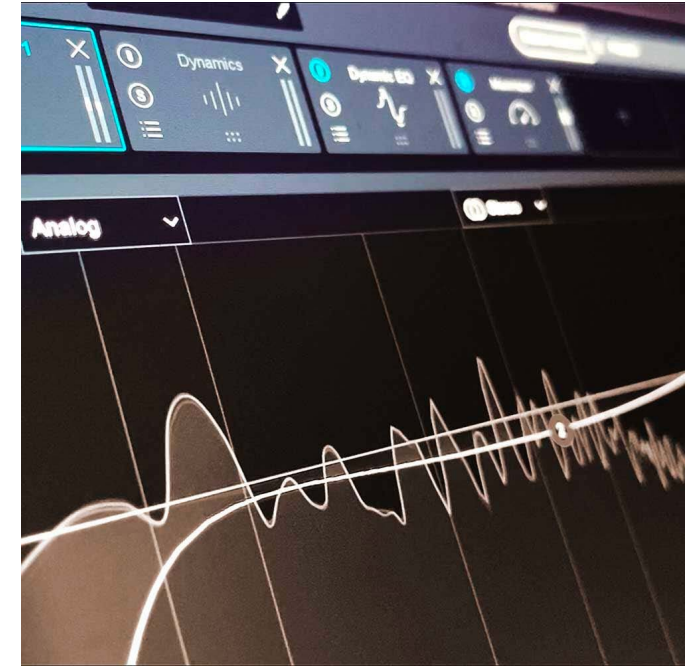
**An ambivalence between
apparent destruction and
aesthetic composition.**



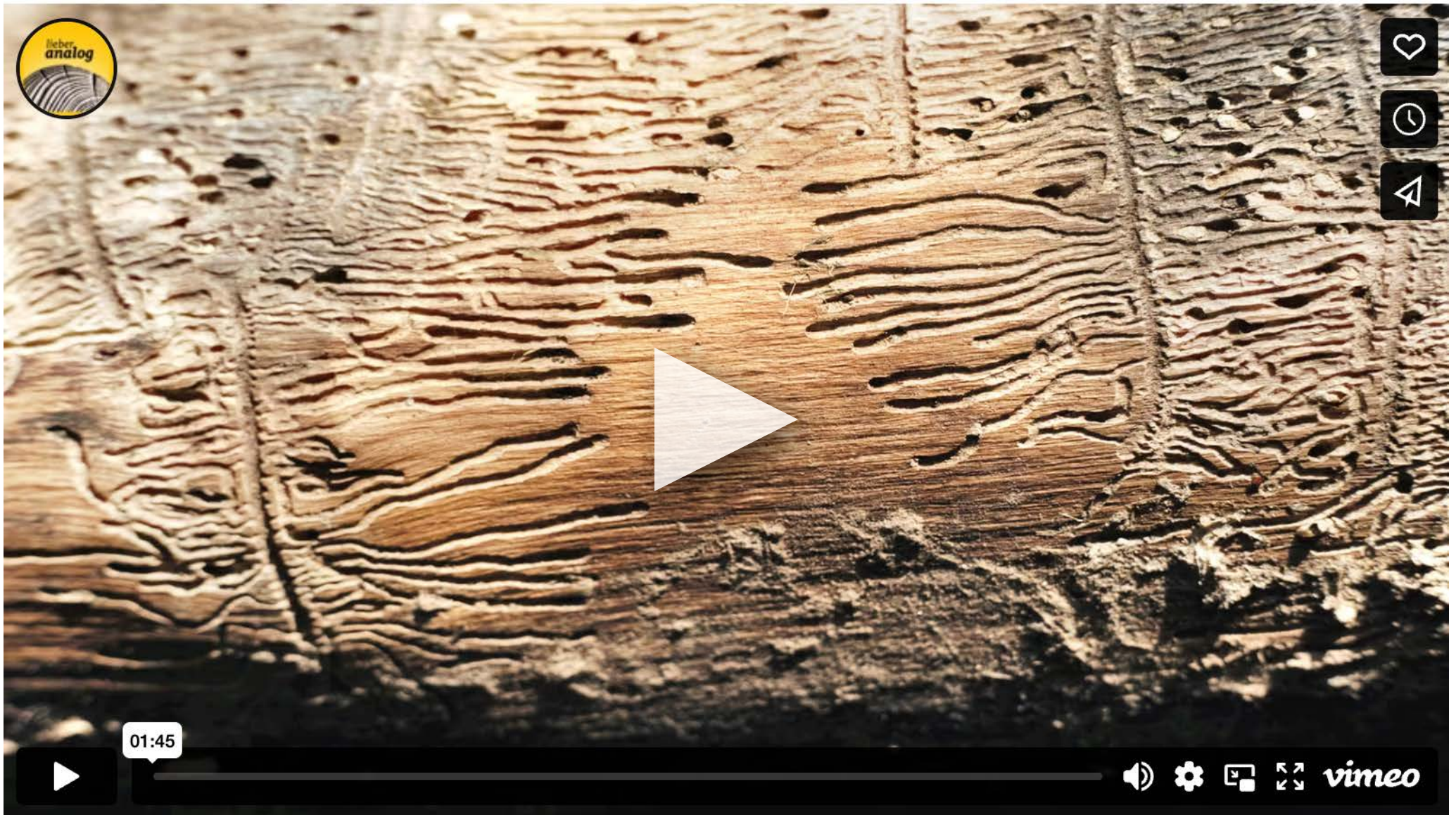
A tree trunk from uprooted nature in the former lignite mines of **Lusatia/Germany**.



Enlarged through **huge lenses**, the traces of eating are reminiscent of Sumerian characters.



Inspired by the pick-up of a long-playing record, a sensor recognizes the tracks and converts them into midi signals that **generate a sound in real time**.



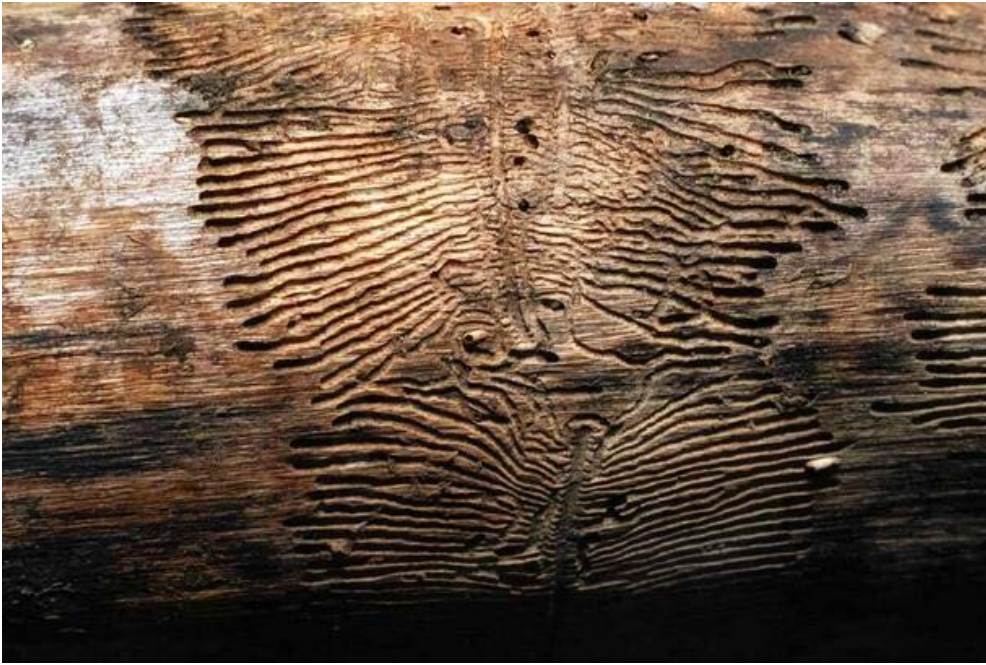
www.vimeo.com/871802279

Artist's statement:

»Humans leave their mark, often much more drastically than on this “record of life”.
Our decisions and consumer behavior have an impact on the world around us.
It is up to us to take responsibility and find sustainable ways of living together with nature.«

Tom Kretschmer

Idea & Concept



**Winner of the
Andreas Art Prize 2023**

**Art exhibition »Natur-Mensch«
National Park Harz, Germany**

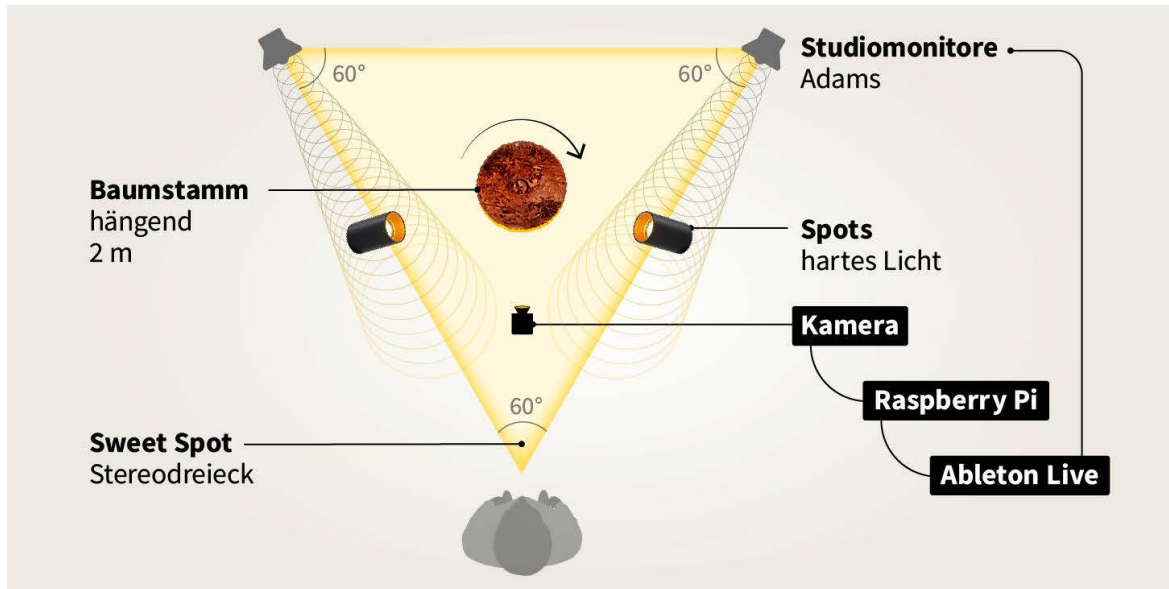
September 17th – October 28th 2023

»Does one living being have
less value than another?
Evolution has no judgement.«

Dr. Michael Geiger
Philosopher

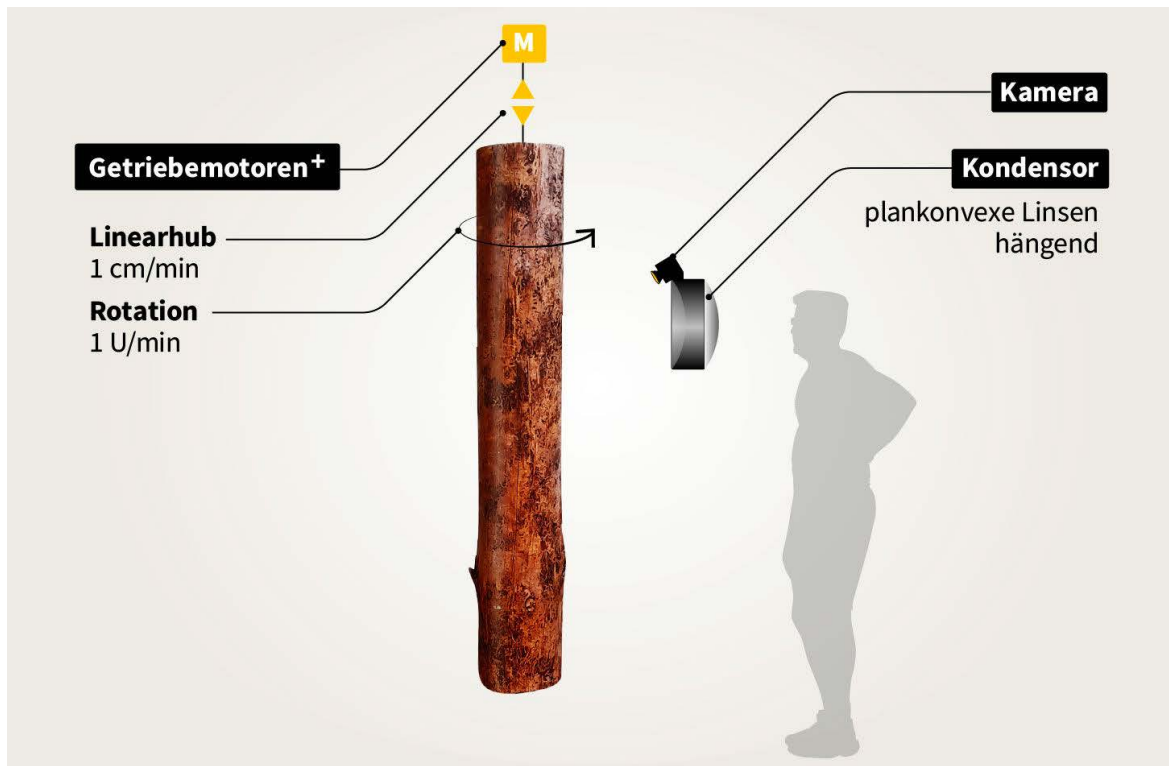
»The bark beetle's construction of their
tunnels results in the destruction of
the tree's bark that simultaneously creates
something aesthetically beautiful. «

Kamila Ingibergsdóttir
Islandic soundartist



Immersive installation

Depending on the incidence of light, the feeding tunnels form different structures, which are recorded by a sensor and analyzed by an algorithm. Midi signals are transmitted to software that generates a sound composition. In real time, the markings in motion create an interactive soundscape: overtones from air currents in the wood



Infinite variations

Inspired by a long-playing record and sound roller, a sensor is directed at the rotating trunk. To prevent the sound from repeating after one rotation, the trunk also moves past the sensor in a vertical direction. Once at the top, the trunk does not rotate backwards, but retains its direction of rotation and is moved downwards. This creates a sound composition with a wide range of variations.

Dimension: 2 meter long/high,
hanging & rotating

Requirements: dark room, 220 V, sound



Concept

The markings, patterns and sounds of the german bark beetle are compared to other bark beetle species in different regions.

Behavior of *Ips typographus* (german bark beetle):

The larvae of the bark beetle follow a structure. They hatch from 50-100 eggs and eat mirror-symmetrical tunnels at right angles to their mother's tunnel. They become thicker and their tunnels wider, they come very close to each other, but never in each other's way. And they do this in the only nutrient-rich layer of the tree. Finally, they pupate into beetles, pierce the bark and fly away.

The cycle begins anew.

The male bores through the bark and sprays pheromones to attract other members of the species. This reduces the resin needed for defense and weakens the tree more quickly. The male hollows out the collecting chamber, attracts the female and mates with her. The female drills the mother duct and lays the eggs like a string of pearls: the starting point for the next composition on the "plate of life".

What principle do humans follow with their consumer behavior?

A project by **lieberanalog.de**

www.lieberanalog.de/projekte/sonus-vitae

Idea & Concept: **Tom Kretschmer**

Sound: **Martin Krause**

Script: **Berlinciaga**

Didgeridoo: **Willi Grimm**

Fujara: **Gérard Widmer**

Beetle sound: **MPA Eberswalde**

Contact:

Tom Kretschmer

Sonntagstr. 29

10245 Berlin

Germany

+49 176 326 39 846

tom@lieberanalog.de